



GMT MONTHLY MEMBERSHIP PROGRESS REPORT

Results as of: 7/31/2018

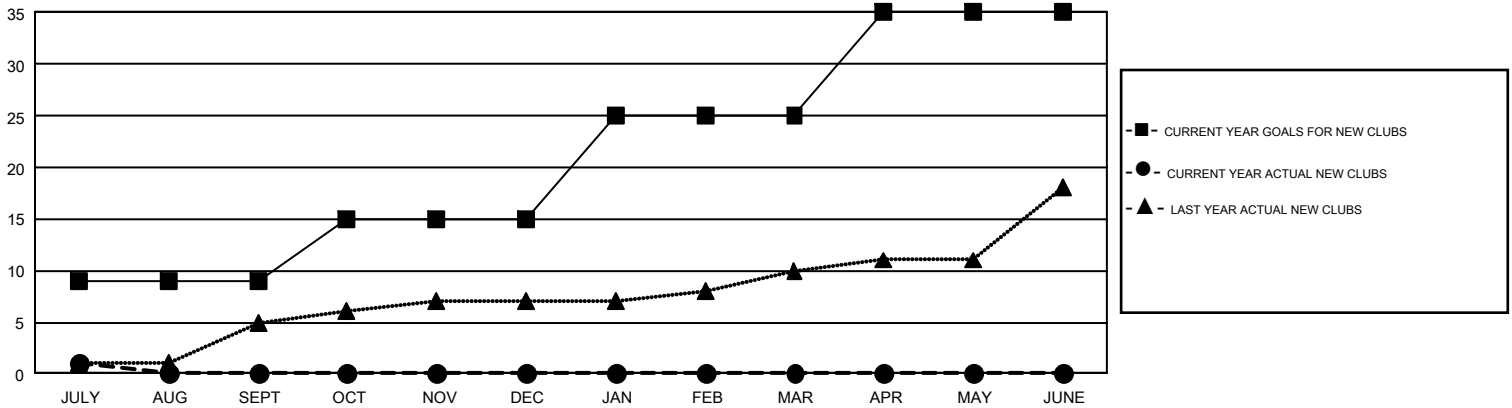
GMT Constitutional Area 1, Group B

GMT: CINDY GREGG

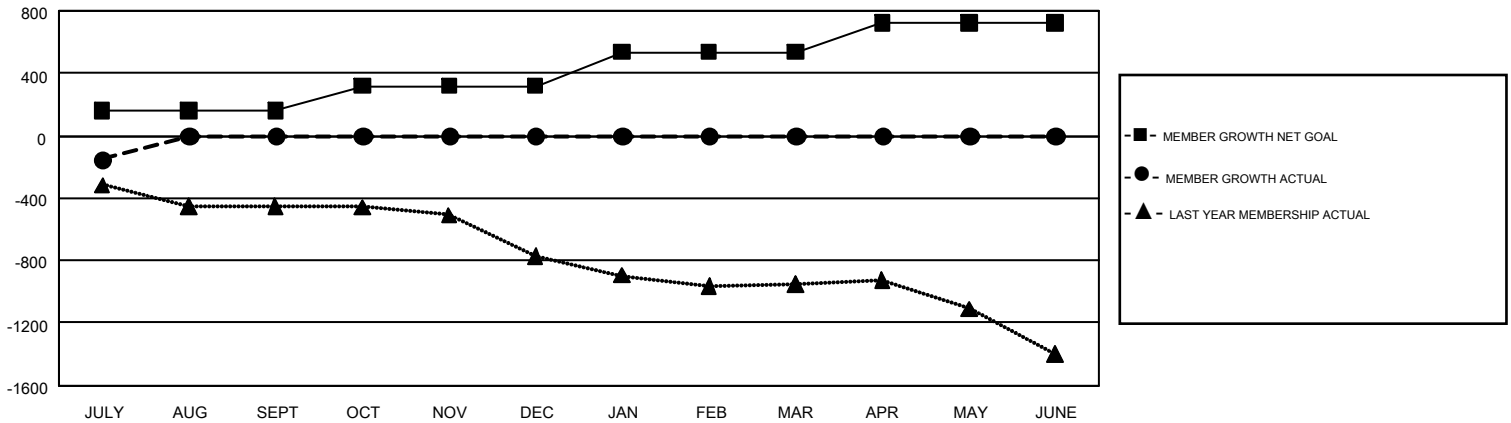
REPORT DOES NOT INCLUDE CLUBS IN UNDISTRICTED AREAS.

Clubs				Members			
RESULTS FOR 2018-2019				RESULTS FOR 2018-2019			
QUARTER	NEW CLUB GOAL	NEW CLUBS	DROPPED CLUBS	QUARTER	MEMBER GROWTH NET GOAL	MEMBER GROWTH ACTUAL	DROPPED MEMBERS ACTUAL (including transfers)
JULY/AUG/SEPT	9	1	9	JULY/AUG/SEPT	163	218	329
OCT/NOV/DEC	6	0	0	OCT/NOV/DEC	157	0	0
JAN/FEB/MAR	10	0	0	JAN/FEB/MAR	218	0	0
APR/MAY/JUNE	10	0	0	APR/MAY/JUNE	188	0	0

GOALS AND ACTUAL NEW CLUBS CUMULATIVE



GOALS AND ACTUAL MEMBERS CUMULATIVE



DROPPED CLUBS: 9	112 CLUBS OF 1,528 ADDED 1 OR MORE NEW MEMBERS	<u>GENDER DISTRIBUTION</u>	
<u>DROPPED MEMBERS</u>		MALE	29,250 (71.52%)
DECEASED	61	FEMALE	11,649 (28.48%)
CLUB CANCELLED	3	TOTAL FAMILY UNIT MEMBERS 7,980	
OTHER	265	FAMILY MEMBERS PAYING HALF DUES 4,090	
TOTAL	329		

[CLICK HERE FOR CUMULATIVE MEMBERSHIP DATA](#)